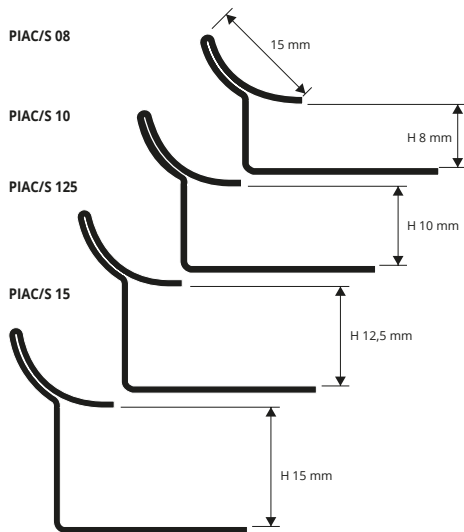


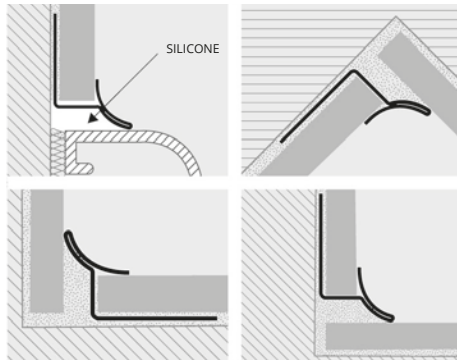
PRINTER AC

POLISHED, SUPER POLISHED AND BRUSHED STAINLESS STEEL AISI 304/1.4301-V2A

PRINTER AC is a cove-shaped profile in polished, super polished and brushed stainless steel AISI 304 / 1.4301 - V2A. It is particularly suitable to ensure cleanliness and hygiene in every kind of environment where high resistance to mechanical and chemical stresses are required. Its particular section and the availability in three finishes and special pieces, such as internal and external corners, make **PRINTER AC** a much sought after profile. The profile is easy to match with the wall covering and allows a workmanlike application even in environments subject to high mechanical stresses.



EXAMPLES AND INSTRUCTIONS FOR LAYING METHODS



1. Choose "PRINTER AC" according to the tile thickness and desired finish.
2. Cut "PRINTER AC" to the desired length and apply the adhesive on the support where the profile will be laid.
3. Press the anchoring flange of "PRINTER AC" into the adhesive.
4. Lay the tiles, aligning them with the profile leaving a 2 mm joint. Remove immediately all remains of adhesive from the surface of the profile.
5. Fill the joints between the profile and the tiles with grout, in order to avoid water stagnation. Remove immediately all the remains of grout from the surface of the profile.



POLISHED STAINLESS STEEL AISI 304/1.4301 V2A with protective film
bar length 2,7 lm - pack. 20 Pcs - 54 lm - 10/10 mm

Article	H mm
PIAC 08	8
PIAC 10	10
PIAC 125	12,5
PIAC 15	15

SUPER POLISHED STAINLESS STEEL AISI 304/1.4301-V2A
thermo packed

bar length 2,7 lm - pack. 20 Pcs - 54 lm - 10/10 mm

Article	H mm
PIACML 08	8
PIACML 10	10
PIACML 125	12,5
PIACML 15	15

COLOURS



AC - Polished stainless steel AISI 304/1.4301-V2A
ACML - Super polished stainless steel AISI 304/1.4301-V2A
ACS - Brushed stainless steel AISI 304/1.4301-V2A

SUITABLE FOR USE IN CONTACT WITH FOODSTUFFS.

Corners of the on demand profiles are also on demand *



BRUSHED STAINLESS STEEL AISI 304/1.4301 V2A with protective film
bar length 2,7 lm - pack. 20 Pcs - 54 lm - 10/10 mm

Article	H mm
PIACS 08	8
PIACS 10	10
PIACS 125	12,5
PIACS 15	15

INTERNAL, EXTERNAL, THREE-WAYS PRINTER CORNER JOINTS

POLISHED STAINLESS STEEL AISI 316/1.4404-V4A - pack. 2 Pcs

Article	Pack. 2 Pcs
REPIACM/2	
RIPIACM/2	
RITPIACM/2	

INTERNAL, EXTERNAL, THREE-WAYS PRINTER CORNER JOINTS

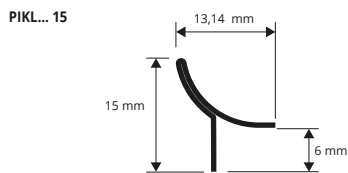
BRUSHED STAINLESS STEEL AISI 316/1.4404-V4A - pack. 2 Pcs

Article	Pack. 2 Pcs
REPIACMS/2	
RIPIACMS/2	
RITPIACMS/2	

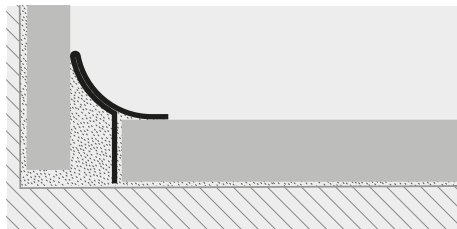
PRINTER KL ACC

STAINLESS STEEL AISI 304/1.4301-V2A

PRINTER KL ACC is a cove-shaped profile in stainless steel AISI 304/1.4301-V2A. The profile allows to connect the floor and wall coverings in ceramic and mosaic also with low thickness. It is particularly suitable to ensure cleanliness and hygiene in every kind of environment where good resistance to mechanical and chemical stresses are required. Its particular section makes **PROSHELL KL ALL** a much sought after profile.



EXAMPLES AND INSTRUCTIONS FOR LAYING METHODS



1. Choose "PRINTER KL ACC" according to the desired finish.
2. Cut "PRINTER KL ACC" to the desired length.
3. Apply the silicone along the floor-wall connection.
4. Press the arrowhead of "PRINTER KL ACC" into the silicone evenly until it is completely adherent to the floor and wall.

SUITABLE FOR USE IN CONTACT WITH FOODSTUFFS



POLISHED STAINLESS ST. AISI 304/1.4301-V2A with protective film
bar length 2,7 lm - pack. 40 Pcs - 108 lm - 10/10mm

Article	H mm
PIKLAC 15	15

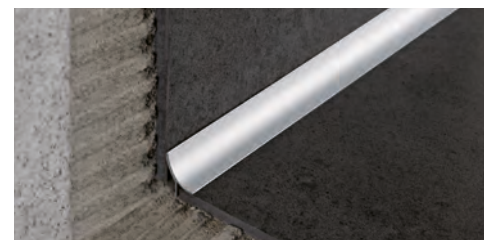
BRUSHED STAINLESS ST. AISI 304/1.4301-V2A with protective film
bar length 2,7 lm - pack. 40 Pcs - 108 lm - 8/10mm

Article	H mm
PIKLACS 15	15

COLOURS



AC - Polished stainless steel AISI 304/1.4301-V2A
ACS - Brushed stainless steel AISI 304/1.4301-V2A



SANDED STAINLESS ST. AISI 304/1.4301-V2A with protective film
bar length 2,7 lm - pack. 40 Pcs - 108 lm - 10/10mm

Article	H mm
PIKLACSB 15	40,50

SUPER POLISHED ST. AISI 304/1.4301-V2A with protective film
bar length 2,7 lm - pack. 40 Pcs - 108 lm - 10/10mm

Article	H mm
PIKLACML 15	15

AVAILABLE MINIMUM QUANTITY 100 PCS



ACSB - Sanded stainless steel AISI 304/1.4301-V2A
ACML - Super polished stainless steel AISI 304/1.4301-V2A
ACSB - SPECIAL FINISH, REQUEST AVAILABILITY

* = Production on demand with minimum quantity of 100 pcs. Production delay 4/5 weeks. Price to be agreed