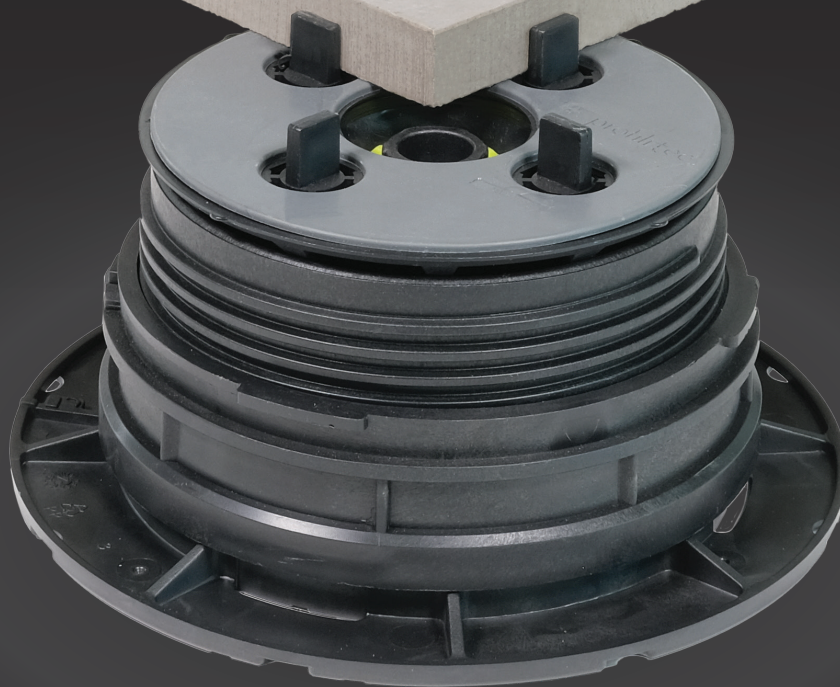


EN

up+tec®



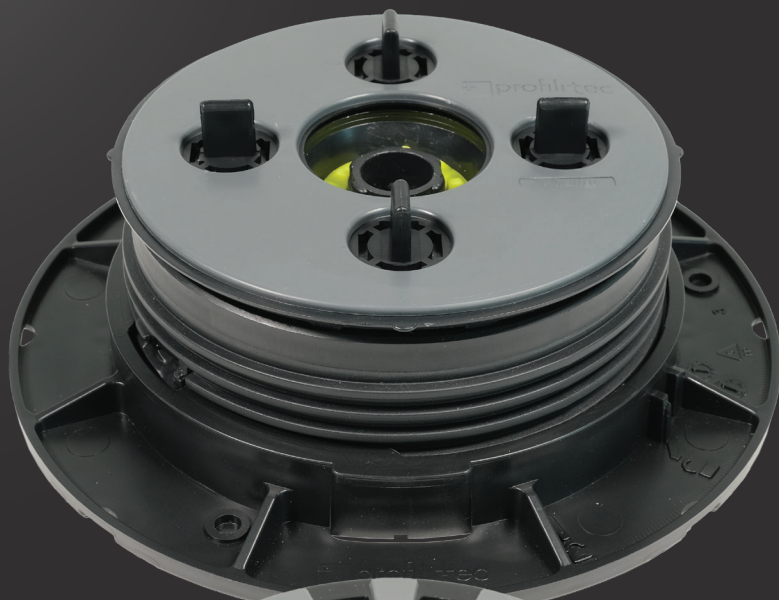
**Pedestal system**  
for raised floors

 **profiltec**  
positive profile



up+tec®



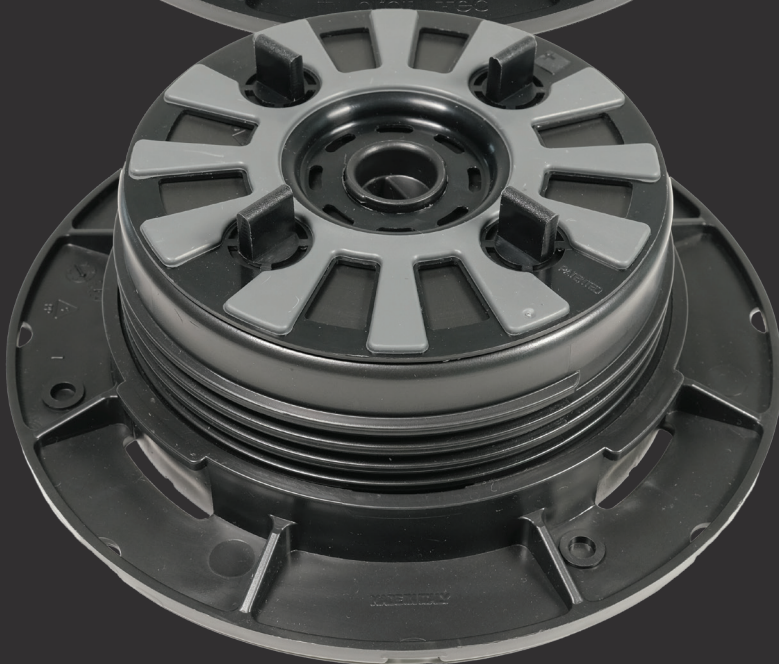


up+tec®

Pedestals for raised floors with integrated system for switching from self-levelling to fixed head.



Patented system



up+tec® FX

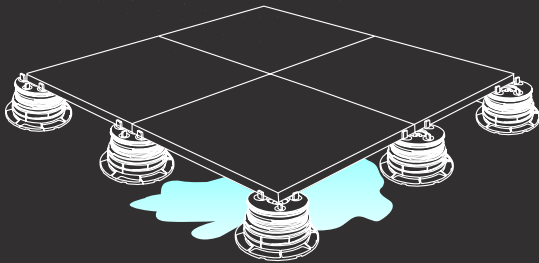
Fixed head pedestals for raised floors.



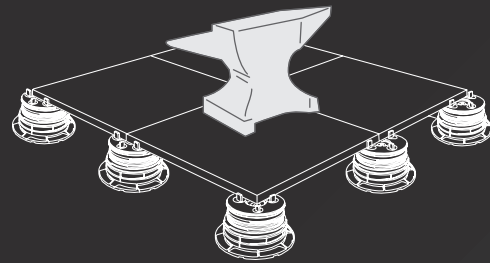
Patented system

# RAISED FLOORS

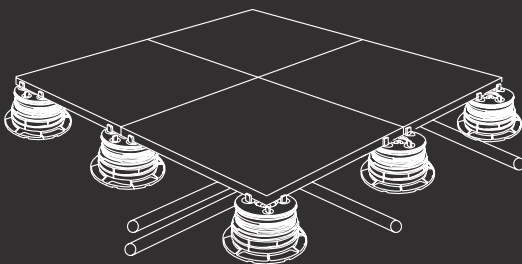
The installation of raised floors offers benefits that go beyond a simple aesthetic function. They are ideal for hiding pipes and electrical systems, promote rain water outflow, reduce footstep noise, and the ease of inspection makes the system versatile and safe. Profillitec's uptec system is the best solution for outdoor raised floors such as terraces, gardens, pool sides, verandas and public places while offering very high load resistance.



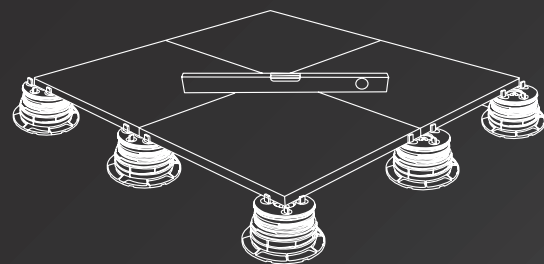
Rapid water outflow



High load resistance



Ideal for hiding pipes and installation cables



Level and easy to inspect floor



# Applications

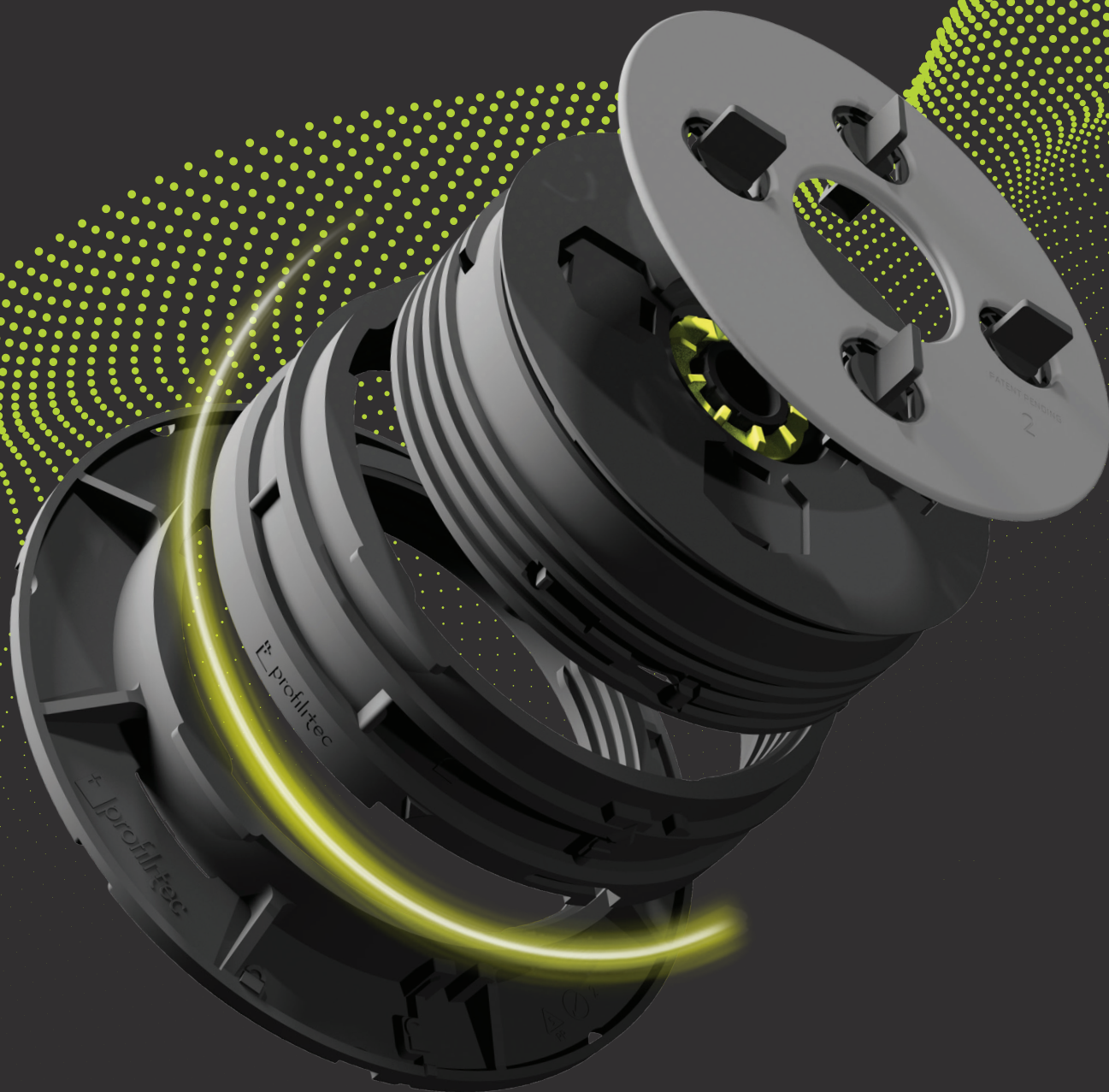
Terraces  
Poolsides  
Roof decks  
Walkways

Gazebo  
Hot tubs  
Gardens  
Bars and restaurants



# SELF-LEVELLING AND FIXED HEAD PEDESTALS

uptec







uptec® **3<sub>in</sub>1**

Uptec is a system consisting of self-leveling and fixed head supports adjustable in height for the realization of raised floors. Uptec is based on the **3-in-1** concept, three products (3 base items) that offer a unique logistical advantage and can achieve any height and compensate up to 5% slope with the combination of only 3 components.

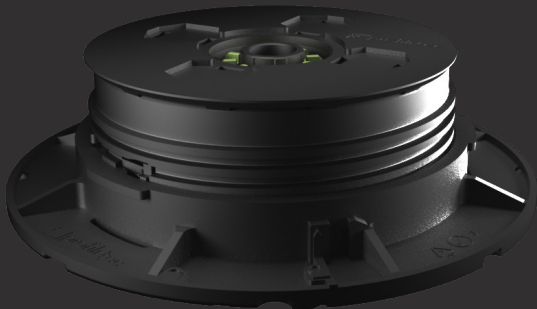
uptec®

uptec



**SUPAL**

Low pedestal



**SUPAS**

Standard pedestal

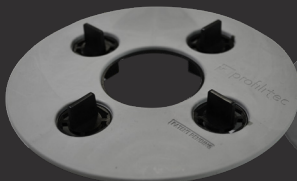


**SUPAR**

Extension ring

combinable with

**SUPA2**



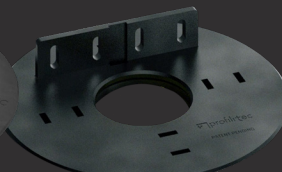
Head with 5/64"  
(2 mm) tabs

**SUPA4**



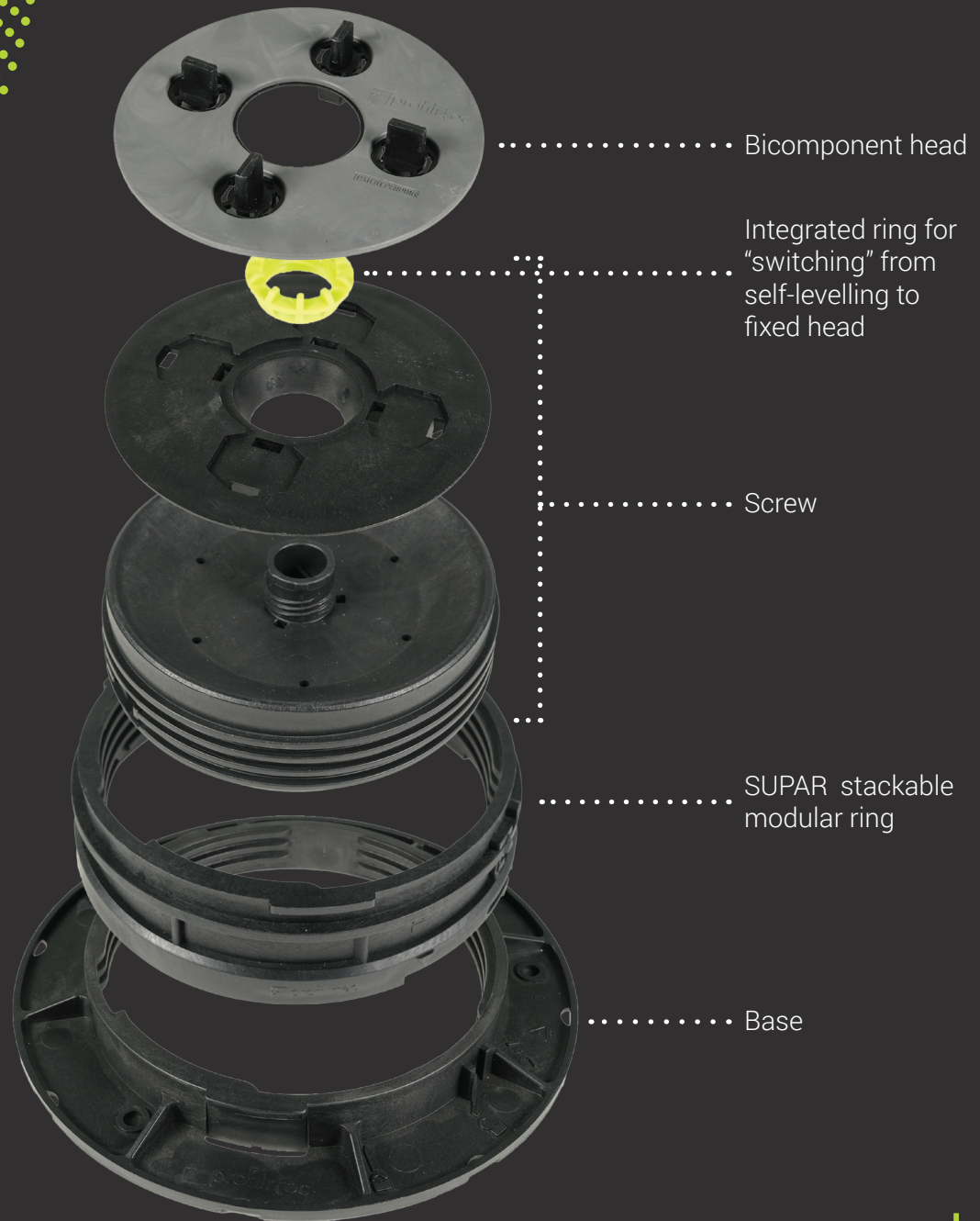
Head with 5/32"  
(4 mm) tabs

**SUPAW**



Head to be fixed on  
wooden joists

# COMPOSITION



# HEIGHT PROGRESSION

The combination of the three elements, along with the special self-levelling or fixed head, offers the possibility to achieve notable installation heights even when the underlying surface is sloped (up to 5%). An advantage that allows an extraordinary versatility even during installation.

uptec



Stackable modular rings designed to achieve **any installation height** (from 2' 9/32" - 58 mm).



**1 SUPAR**  
+ 1' 3/16"  
(+ 30 mm)

uptec

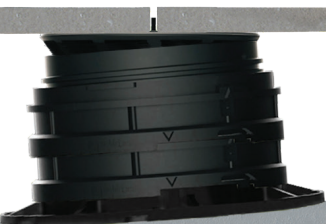
uptec®

# SELF-LEVELLING AND FIXED HEAD

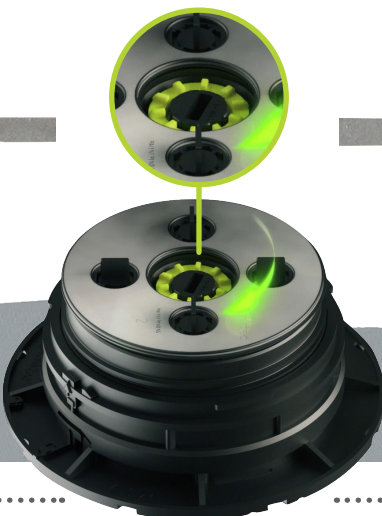
The uptec system offers an innovative solution in which the switch from a self-levelling to a fixed head system is made quickly and accurately by adjusting a specially designed ring nut, which is already assembled.

uptec

## SELF-LEVELLING



5% SLOPE

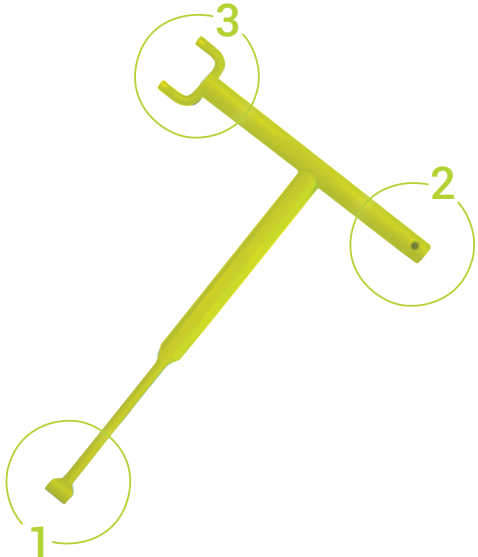


## FIXED



0% SLOPE

# SUPAK MULTIFUNCTION KEY



1 Height adjustment



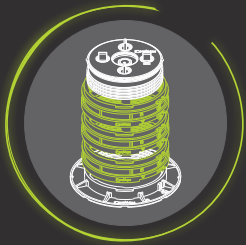
2 Tab removal



3 From self-levelling to fixed head

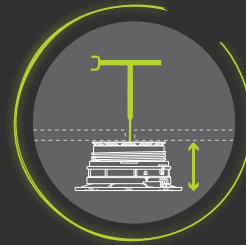


# FEATURES AND FUNCTIONS



## Modular height

Add SUPAR ring to increase the height of the pedestal



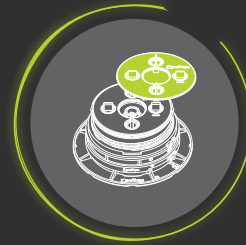
## Adjustable height

Height of the pedestal can be adjusted from the top even when the floor is laid



## Self-levelling and fixed head

Simple integrated switching mechanism from self-levelling head to fixed head



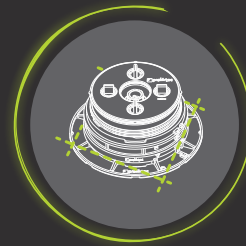
## Interchangeable heads

Interchangeable heads for standard, wood or aluminum joist installations



## Anti-slip and anti-noise

Heads equipped with anti-slip and anti-noise rubber to reduce noise from footsteps and impacts



## Pre-cut base

Cut marks on the base to facilitate placement on corners and perimeters



## Low environmental impact

Made completely from recycled and recyclable material

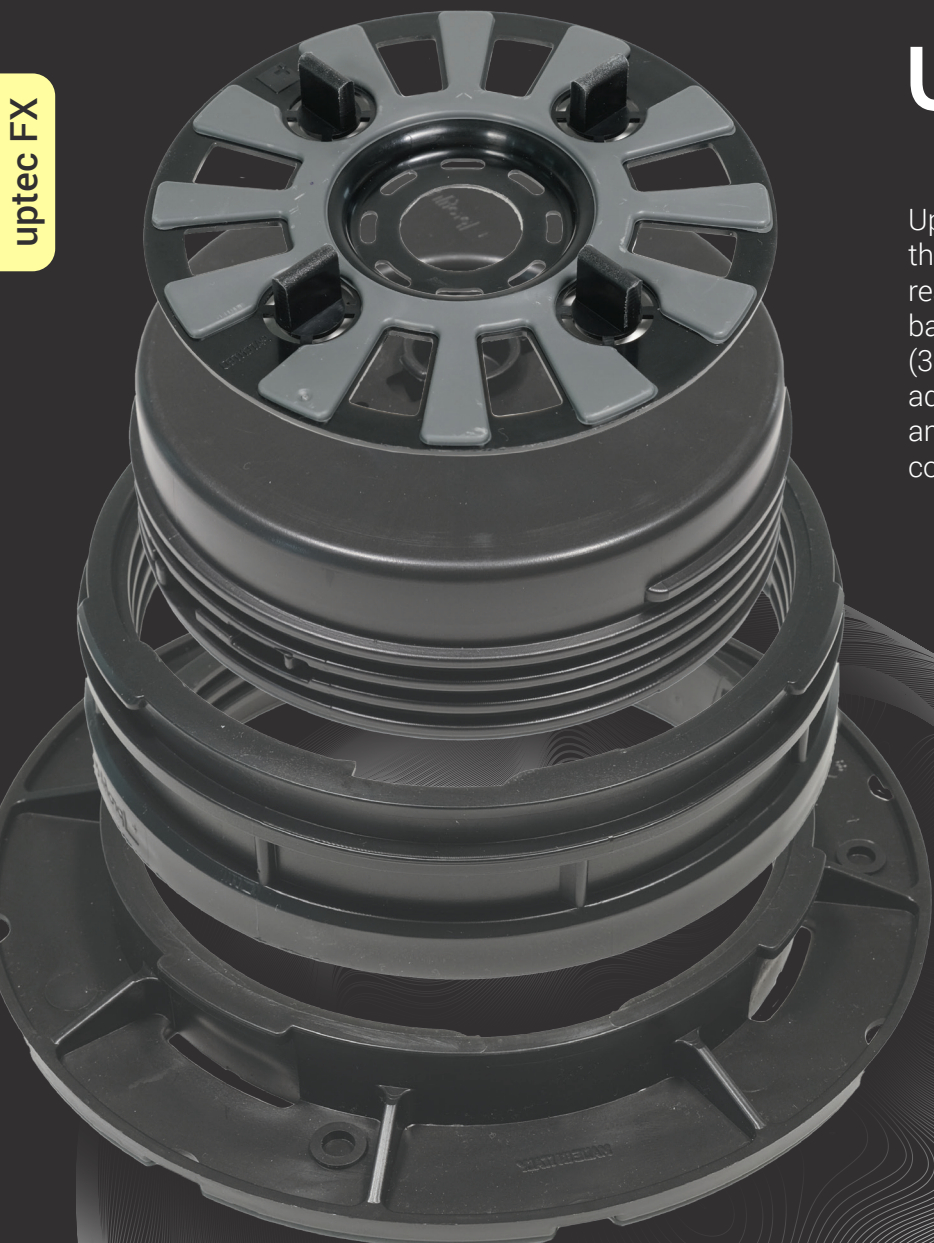


## Load resistance

Resistance to loads up to 3086 lb (1400 kg)

# FIXED HEAD PEDESTALS

uptec FX



uptec<sup>®</sup> FX

Uptec FX is a system of fixed head supports that can be adjusted in height for the realization of raised floors. Uptec FX is also based on the **3-in-1** concept, three products (3 base items) that offer a unique logistical advantage and make it possible to achieve any height with the combination of only 3 components.

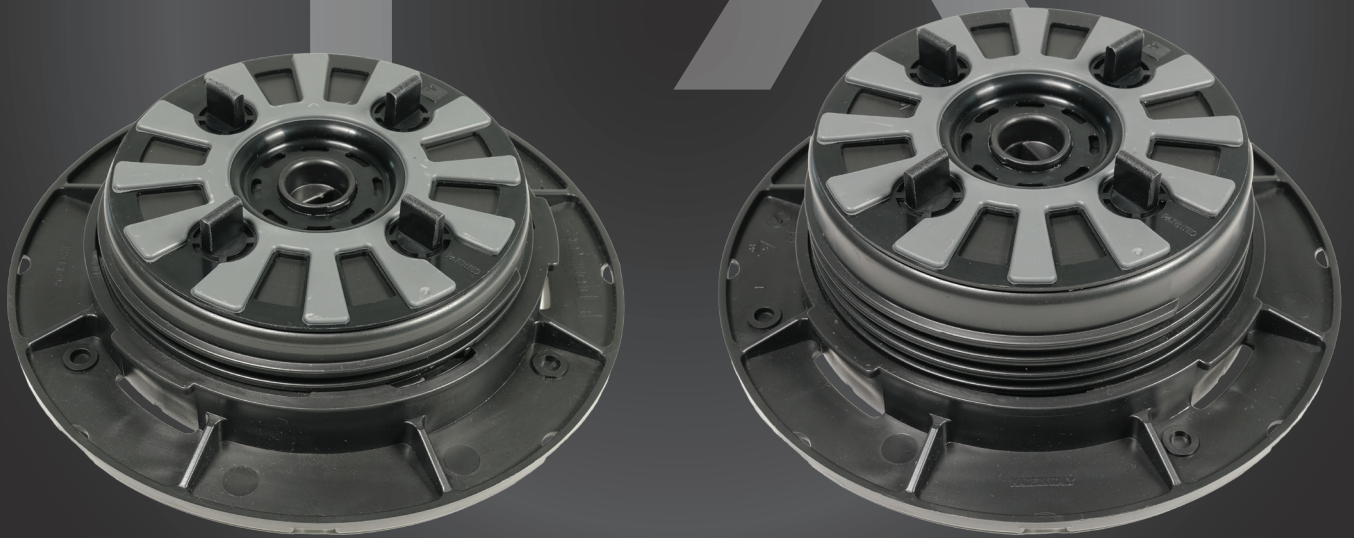


The ideal solution in terms of ease of use in the case of large, horizontal and planar surfaces.



# FX

uptec FX



uptec<sup>®</sup> FX

# SUPALFX

Low pedestal

3  
IN  
1

# SUPASFX

Standard pedestal

# SUPAR

Extension ring

combinable with

SUPA2FX

SUPA4FX



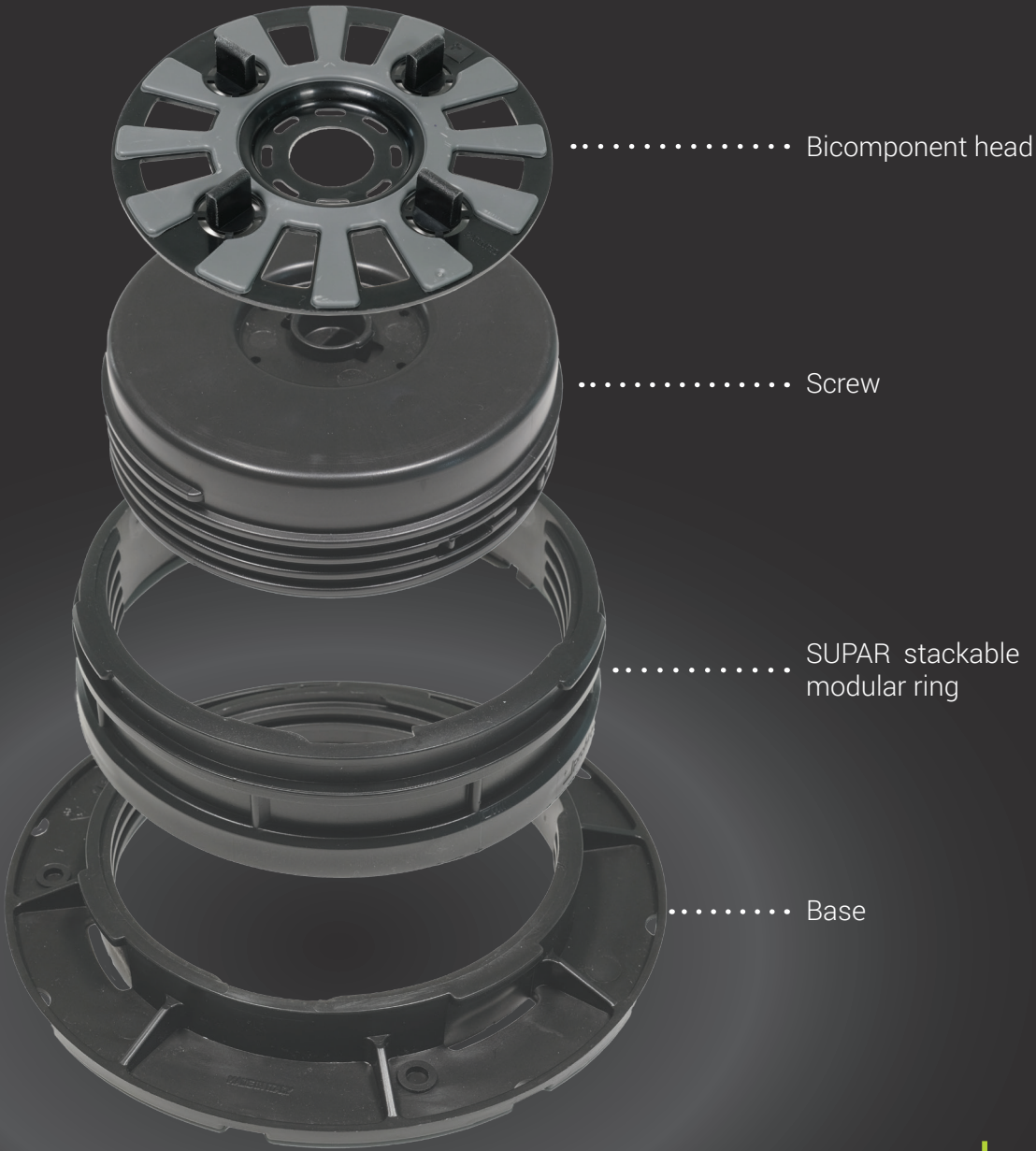
Head with 5/64"  
(2 mm) tabs



Head with 5/32"  
(4 mm) tabs

uptec FX

# COMPOSITION

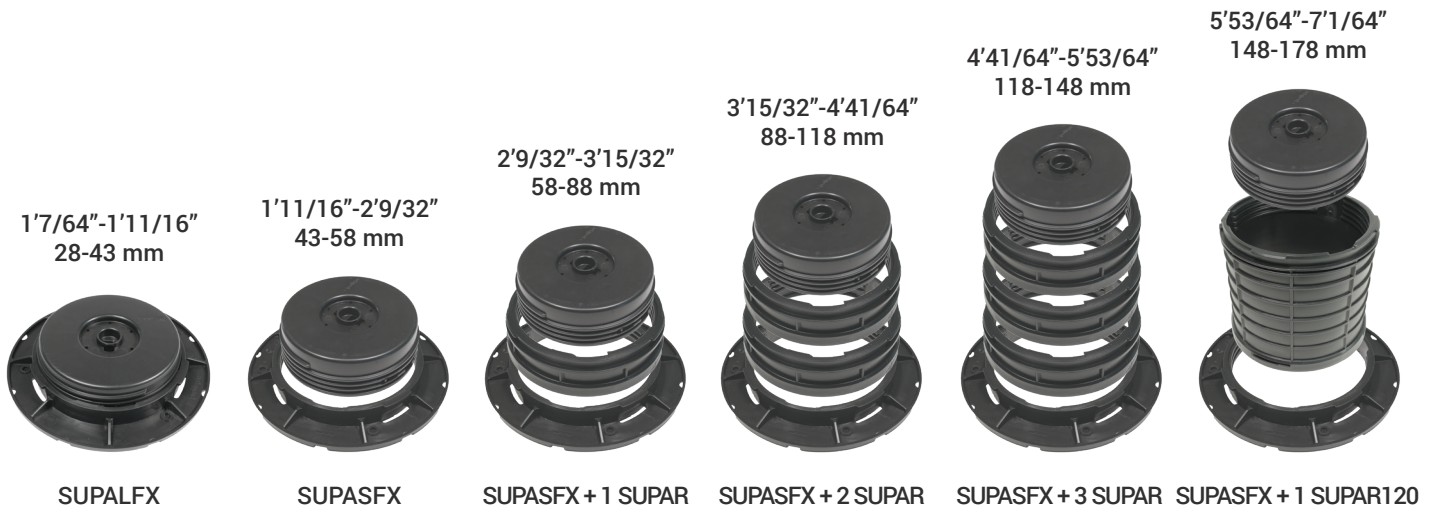


uptec FX

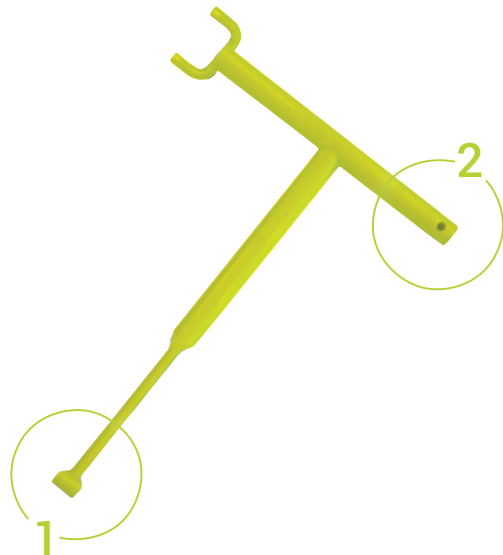
# HEIGHT PROGRESSION

The combination of the 3 components makes it possible to achieve any installation heights. An advantage that offers extraordinary versatility during ongoing installation.

uptec FX



## SUPAK MULTIFUNCTION KEY



1 Height adjustment

2 Tab removal



# FEATURES AND FUNCTIONS



## Modular height

Add SUPAR ring to increase the height of the pedestal



## Adjustable height

Height of the pedestal can be adjusted from the top even when the floor is laid



## Slope compensation

Dedicated accessory for slope correction when needed



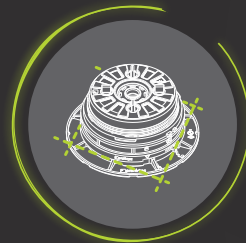
## Interchangeable heads

Interchangeable heads for standard or aluminum joist installations



## Anti-slip and anti-noise

Heads equipped with anti-slip and anti-noise rubber to reduce noise from footsteps and impacts



## Pre-cut base

Cut marks on the base to facilitate placement on corners and perimeters



## Low environmental impact

Made completely from recycled and recyclable material



## Load resistance

Resistance to loads up to 3086 lb (1400 kg)

up+tec<sup>®</sup>  
ground

Uptec ground is a support system for the creation of raised floors featuring reduced height, for outdoor use. Two adjustable support models from 3/8" - 10 to 9/16" - 15 mm, SUPT (for 5/64" - 2 mm joints) or SUPT4 (for 5/32" - 4 mm joints). Height can be increased by 5 mm using the stackable accessory SUPB (up to a maximum of 3). The system is manually adjustable and does not require the use of an adjustment key.

uptec ground



**SUPT/**  
**SUPT4**

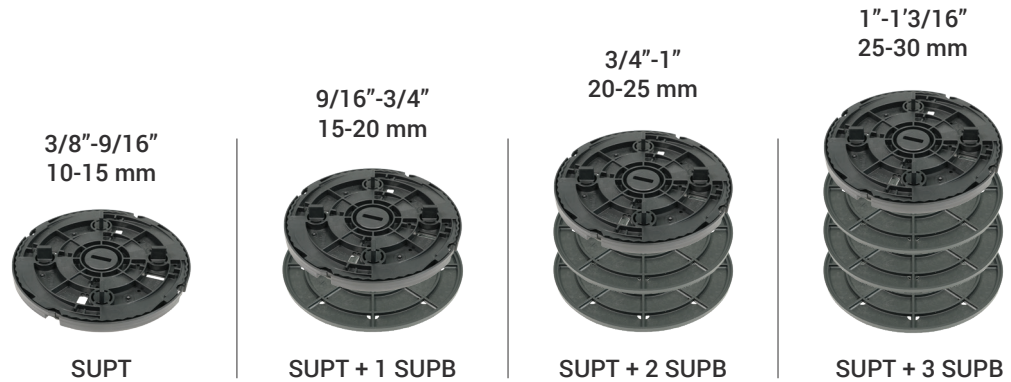
Adjustable pedestal  
from 3/8" to 9/16"  
(from 10 mm to 15 mm)



**SUPB**

Extension + 3/16" (+5 mm)

# HEIGHT PROGRESSION



uptec ground

# FEATURES AND FUNCTIONS



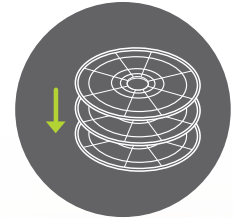
Height can be adjusted by 1/32" (0.5 mm) at the time



Desired height is clearly visible in inches and mm



Made completely from recycled and recyclable material



Stackable extension to obtain greater heights



# THE MODULARITY OF UPTEC AND UPTEC FX

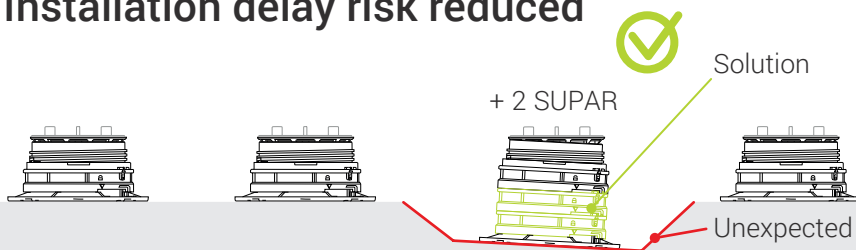
## ADVANTAGES AT THE CONSTRUCTION SITE



### Minimized returns

Any leftover items are easily used in future installations.

### Installation delay risk reduced



Unexpected obstacles due to ground configuration can be quickly resolved.  
Back-and-forth between construction site and warehouse are avoided in case of unexpected complications.





# ADVANTAGES IN WAREHOUSE



## Optimized stock management

Minimal number of SKUs permits:

- Extremely simplified management of the entire supply chain.
- Minimized returns from the construction site.

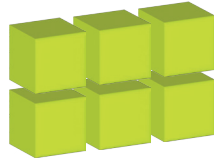
**Profilitec**



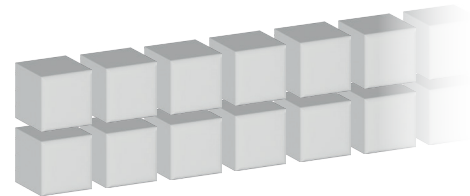
**Other solutions**



## Minimum stocked volume and value



**Profilitec**



**Other solutions**

# PRODUCT ENGINEERING

Profilltec applies state of the art engineering calculation methods to ensure the highest quality and performance standards.

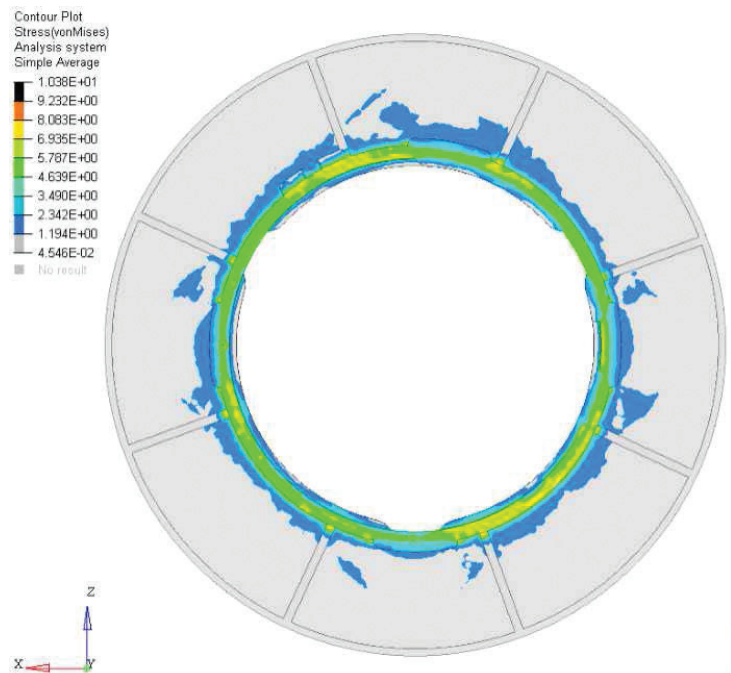
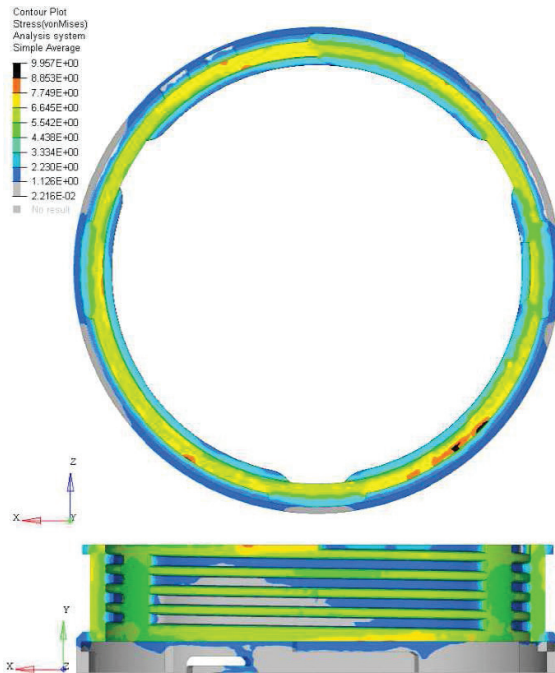
FEM (Finite Element Method) is a numerical technique that is used in load bearing analysis to evaluate the behavior of a product or structure under stress.

Applying the expected loads, the FEM calculates the stresses, deformations, and structural reaction. The results obtained provide an assessment of the stability and thus the safety of the structure, enabling optimization of the design and prevention of possible failure or collapse.

## Degree of load distribution

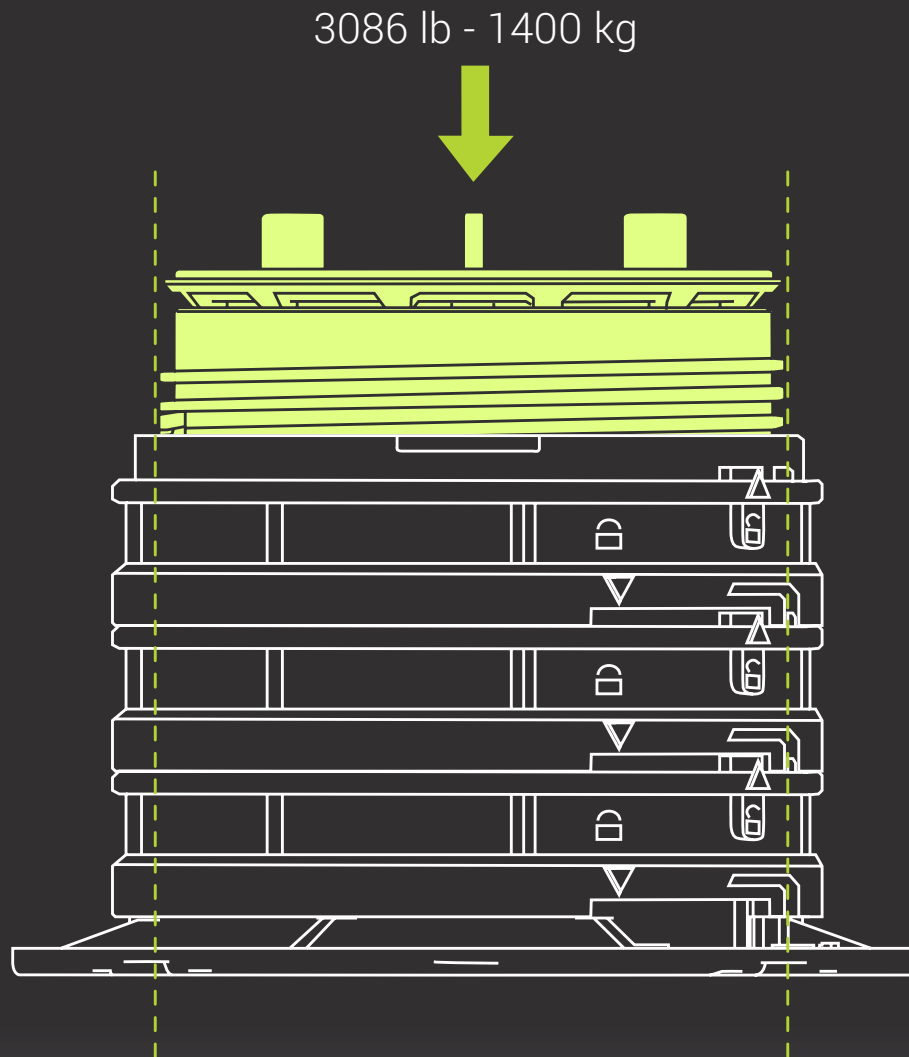


Thanks to the FEM calculation, simulating loads applied to the uptec head, it is noticeable that the load stress on the screw thread develops vertically on the support. This **stress is concentrated only in the circumference** and is not distributed on the base. This means that due to the larger diameter, uptec has an ideal load distribution ensuring **high weight resistance**.



# RECORD-BREAKING STRENGTH, STABILITY AND SAFETY

Uptec has an exceptional load resistance of 3086 lb - 1400 kg. Moreover, thanks to the large head surface and the large diameter of the fifth wheel, it offers greater stability to the tile when it is placed and perfect load distribution. These features guarantee outstanding safety and stability performance.



# ACCESSORIES

## SUPACLPB

Clip for perimeter - Base  
to hold 3/4" (2 cm) tiles



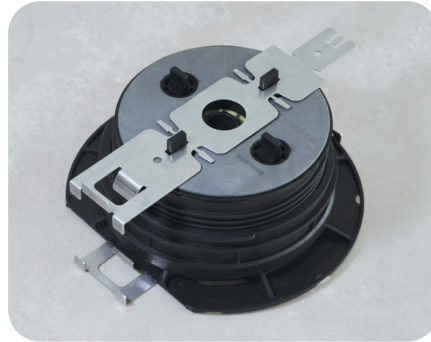
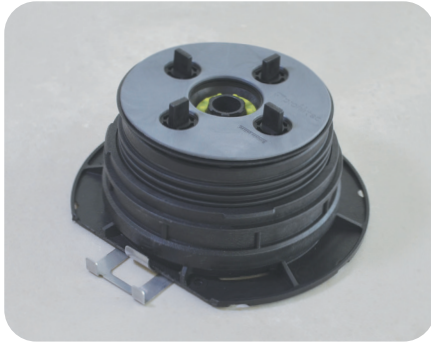
## SUPACLPT

Clip for perimeter - Head  
to hold 3/4" (2 cm) tiles



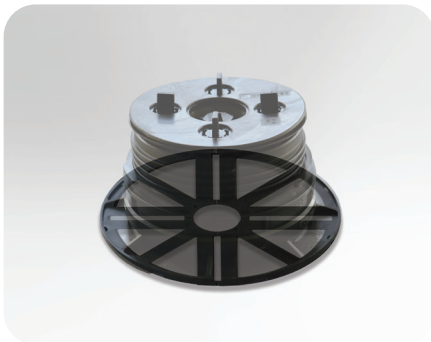
## SUPACLPP

Perimeter tile spacer  
to hold tiles



## SUPL2 - SUPL3

Leveling disk  
3/32" (2 mm) and 1/8" (3 mm) and  
uptec FX slope compensation



## SUPAR120

Modular ring  
of 4-3/4" (120 mm)  
height



## SUPATG

Mat for substrate  
protection



# PERIMETER BORDERS

Profilitec offers a wide range of high-quality border profiles, raised floors with uptec and uptec FX systems can be vertically finished with a choice of 3 different perimeter profiles that fully meet architectural requirements in terms of installation heights, configurations and colors.

## BSJ

Profile with decorative visible part of 3/4" (2 cm)



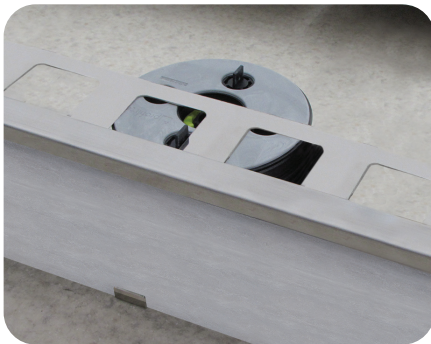
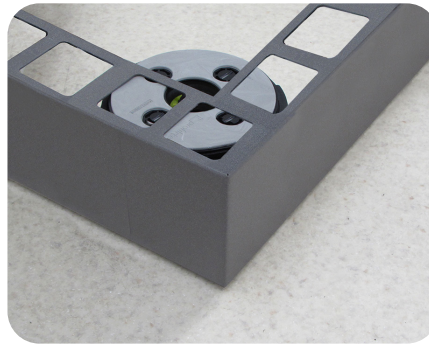
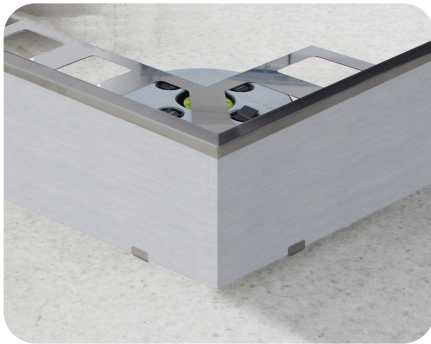
## BSR

Perimeter profile for 3/4" (2 cm) tiles



## BST

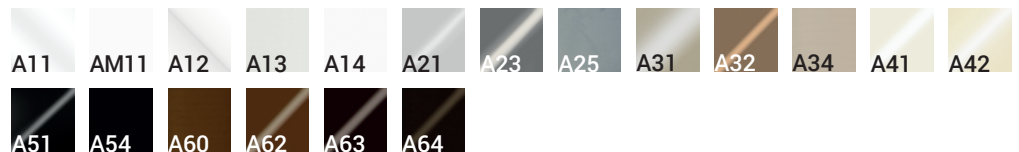
Profile with minimal top-visible edge



### Standard finishes:



### Finishes on demand:



Perimeter border available for both uptec and uptec FX

up+tec® up+tec®FX

# PERFORATED JOIST WITH RUBBER INSERT

SUPAANG240 is a patented aluminum joist for raised floors that offers freedom and flexibility in the choice of materials, size, and flooring installation pattern.



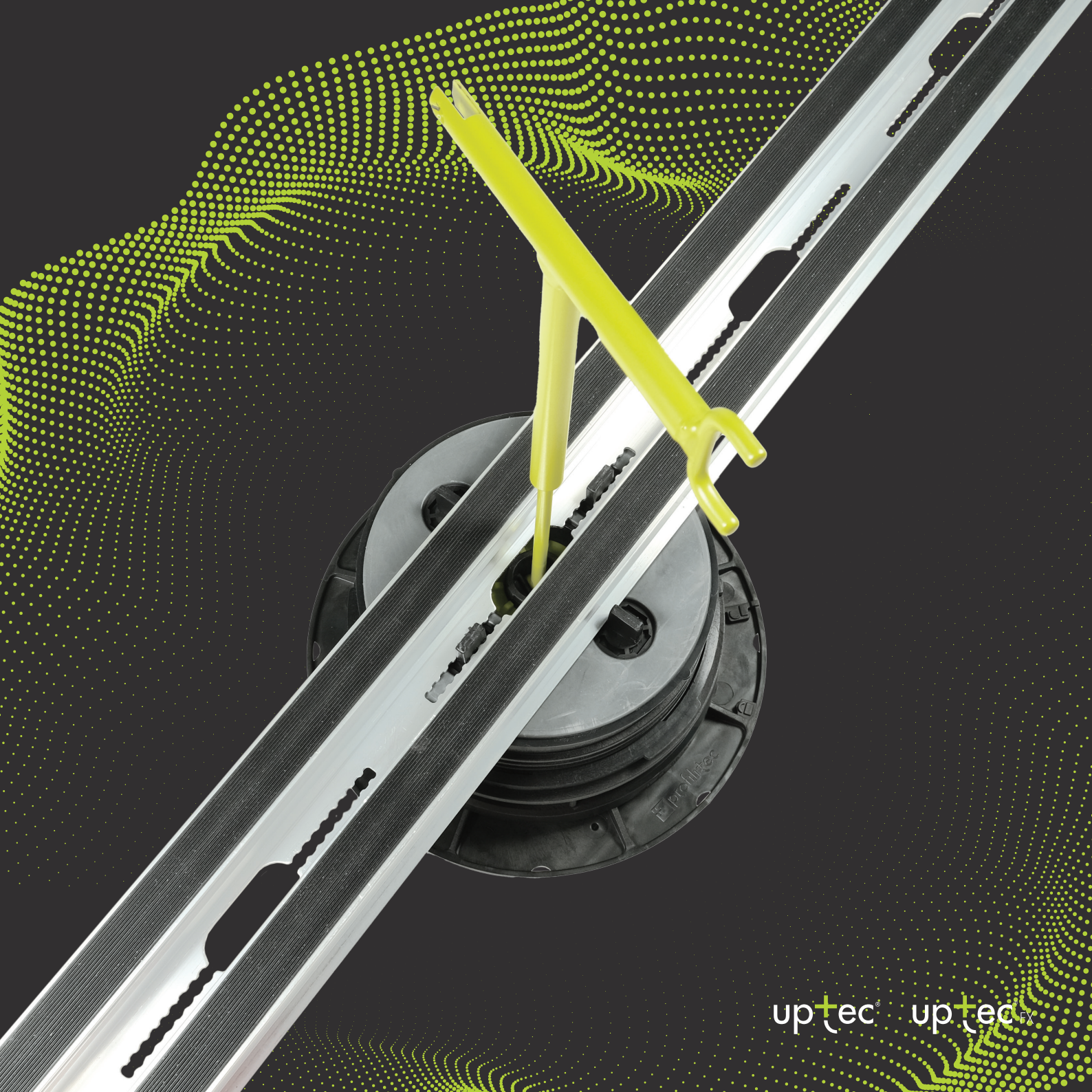
## Anti-slip and anti-noise rubber

The upper part is equipped with two special rails where anti-slip and anti-noise rubber gaskets are inserted. The joist is supplied with pre-applied rubber, saving installers valuable time and ensuring a quick and easy installation.

## Punched openings

The lower part includes openings that ensure perfect water outflow and allow for height adjustment during and after installation. Additionally, the dented geometry of the openings ensures a secure and stable attachment to the head of the pedestal.





up+tec® up+tec®

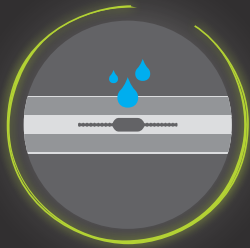
# FEATURES AND FUNCTIONS



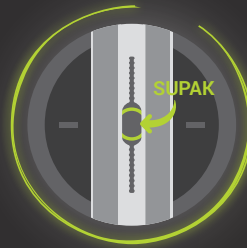
SUPAANG240 offers maximum freedom and flexibility in terms of tile sizes to be used and allows for floors with different laying options and various covering materials.



SUPAANG240 ensures maximum performance for a structurally stable, safe and quick installation.



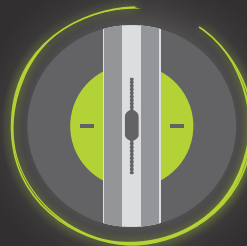
Openings on the base ensure proper water outflow.



Openings on the base allow the height to be adjusted with the SUPAK key during and after installation.



SUPAANG240 comes with the anti-noise rubber bands already installed to save installers valuable time.



Openings on the base ensure safe and stable attachment to the pedestal head.



# JOIST SYSTEM ACCESSORIES

## SUPDG

Tile spacer  
to be used with SUPAANG240



## SUPCLIPG

Perimeter and central clips  
to be used with decking and in  
combination with SUPAANG240



## SUPAJG

Joist junction



## SUPACLPPT

Perimeter tile spacer  
to hold tiles



Accessories available for both uptec and uptec FX

# uptec<sup>®</sup>

## CALCULATOR

[www.profilitec.com/uptec-configurator](http://www.profilitec.com/uptec-configurator)

**Uptec pedestal calculator is an online program to create your own raised floor and calculate the number of supports required for your project.**

It is possible to design the area or upload an architectural drawing, choose from an extensive list of tile sizes, select the width of the joints, and set the desired height of the flooring. The Uptec pedestal calculator automatically determines which and how many supports and accessories are required for the project.

It is an easy and intuitive tool that offers a wide range of functions to simplify your work. It also provides additional information such as calculation of tiles to be used and lb (kg) of CO<sub>2</sub> saved per ft (m<sup>2</sup>) of floor area.



## EPD Certification

Uptec is EPD certified. In building assessments, building products are evaluated through environmental product declarations (EPDs) conducted in accordance with ISO 14025 and EN 15804:2012+A2:2019.

The analysis evaluates the life cycle of the Uptec system and measures it in terms of carbon footprint with independent third-party verification of the statement and data, according to ISO 14025:2006. A series of case studies have shown that Uptec has an improvement of more than 70 percent in terms of carbon footprint over traditional methods of exterior floor assembly, such as glued tiles on a lightweight screed.



Discover more



# EPD

ZERTIFIZIERUNG

# SYSTEM COMPONENTS AND ACCESSORIES

Code	Product description	Pieces for packaging
SUPAL	Low pedestal	24
SUPAS	Standard pedestal	24
SUPALFX	Low fixed head pedestal	24
SUPASFX	Standard fixed head pedestal	24
SUPAR	Modular ring of 1'3/16" (30 mm)	24
SUPAR120	Modular ring of 4'3/4" (120 mm)	24
SUPT	Reduced height pedestal with 5/64" (2 mm) tabs	50
SUPT4	Reduced height pedestal with 5/32" (4 mm) tabs	50
SUPB	Extension for SUPT/SUPT4 pedestals	50



SUPAL



SUPAS



SUPALFX



SUPASFX



SUPT - SUPT4



SUPB



SUPAR



SUPAR120

Code	Product description	Pieces for packaging
SUPA2	Head with 5/64" (2 mm) tabs	240
SUPA4	Head with 5/32" (4 mm) tabs	240
SUPAW	Head to be fixed on wooden joists	240
SUPA2FX	Head with 5/64" (2 mm) tabs for low fixed head pedestals	240
SUPA4FX	Head with 5/32" (4 mm) tabs for standard fixed head pedestals	240



SUPA2



SUPA4



SUPAW



SUPA2FX



SUPA4FX

Code	Product description	Pieces for packaging
BSJ	Perimeter profile	10
BSR	Perimeter profile	5/10
BST20	Perimeter profile	5
SUPL2	3/32" (2 mm) leveling disk	600
SUPL3	1/8" (3 mm) leveling disk	500
SUPATG	Mat to protect the substrate	24
SUPACLPBSET5	Perimeter clip - Base	5
SUPACLPTSET5	Perimeter clip - Head	5
SUPACLPPSET5	Perimeter clip	5
SUPAK	Multifunction key	1



BSJ



BSR



BST



SUPAK



SUPL2 - SUPL3



SUPATG



SUPACLPB



SUPACLPT



SUPACLPP

Code	Product description	Pieces for packaging
SUPAANG240	Aluminum joist for SUPA4 and SUPA4FX	10
SUPAANGB240	Black aluminum joist for SUPA4 and SUPA4FX	10
SUPDG	Tile spacer	500
SUPCLIPG	Perimeter and central clips (Deck)	50
SUPAJGSET20	Joint for joist	20
SUPACLPPT	Perimeter clip to hold tiles	5



SUPAANG240 - SUPAANGB240



SUPDG



SUPCLIPG



SUPAJG



SUPACLPPT

up+tec®





[www.profilitec.com](http://www.profilitec.com)



**Profilitec S.p.A.**



Via Scotte, 3  
36033 Isola Vicentina  
(Vicenza) Italy



[profilitec@profilitec.com](mailto:profilitec@profilitec.com)



+39 0444 268311

**Profilitec Corp.**

472 Meeting Street  
Suite C - #301  
Charleston, SC 29403, USA

[customerservice@profilitec.com](mailto:customerservice@profilitec.com)

+1 855 290 9591